

eco-TRAILER

Tyre Rack Installation Process – Velocity Mk2 RS/IQ & Titan



Please note: This tyre rack is not designed to be installed in an Eco Shuttle. Tyre racks for an Eco Shuttle are available on our website. <https://www.eco-trailer.co.uk/>

 **MADE IN[®]
BRITAIN**

Parts List

Supplied;



2 x Side Legs (1 x left 1 x Right)



A
8 - M6 x 35 Hex Head
8 - M6 Nyloc nut
16 - M6 x 25 x 2.5mm
repair washer



4 x Lockin Pin (2 x left
2 x Right)



B
8 – M6 x 30 Cup Square
8 – M6 “Form A” washer
8 x M6 Nyloc Nut



2 x Side Arms (1 x
left 1 x Right)



C
8 – M6 x 25 Hex Head
8 – M6 “Form A”
washer
8 x M6 Nyloc Nut



2 x Removable
Bars



D
4 – M12 x 25 Hex Head
4 – M12 “Form A”
washer
4 - M12 Nyloc Nut



2 x Sliding Plates

Tools Required for install;

- 1 x Drill
- 2 x 17mm Spanner
- 1 x 6mm (1/4”) HSS Drill Bit
- 1 x Pencil / Pen
- 1 x 13mm HSS Drill Bit
- 2 x 10mm Spanner

Step 1



Place the side leg into position, ensuring the base plate is flat to the floor and angle bracket plate to the side door channel.

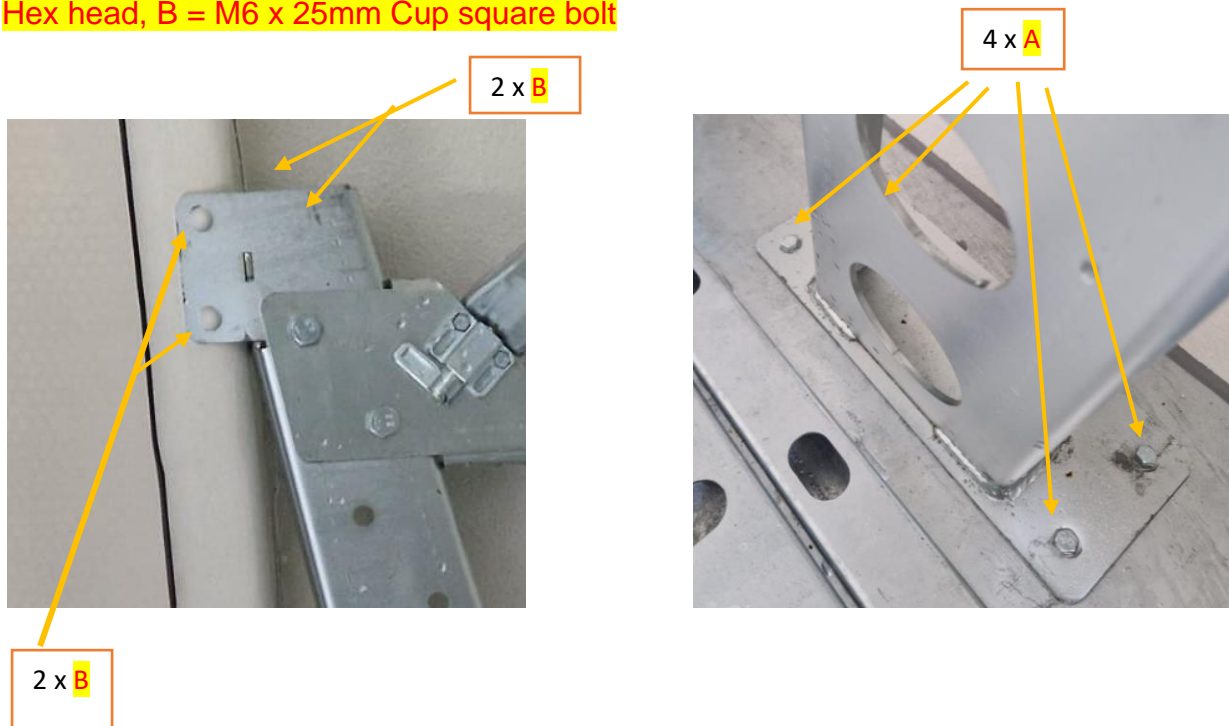
Once in position, using the pre-drilled mounting holes mark all areas to be drilled.

Step 2

Remove the side leg and drill marked area's with a 6mm (1/4") drill bit.

Step 3 - (Whilst this stage of the install can be done alone, a second person may be helpful)

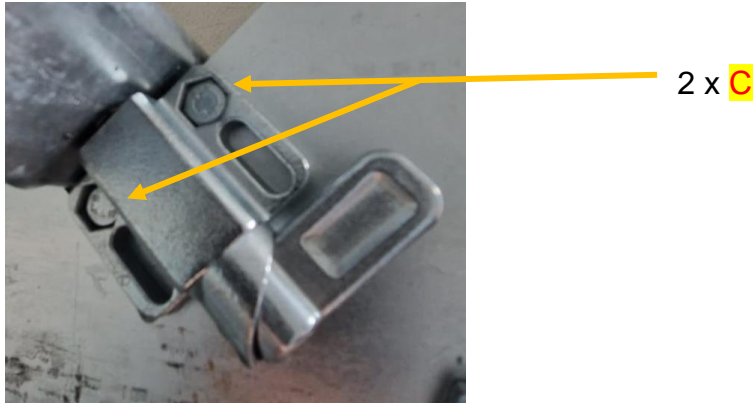
Put the side leg into position and fit the mounting bolts and tighten. Do not over tighten on the rib as this will crush the fibreglass. (See illustration). **A = M6 x 35mm Hex head, B = M6 x 25mm Cup square bolt**



**** White caps supplied to cover the exposed nut of bolt B**

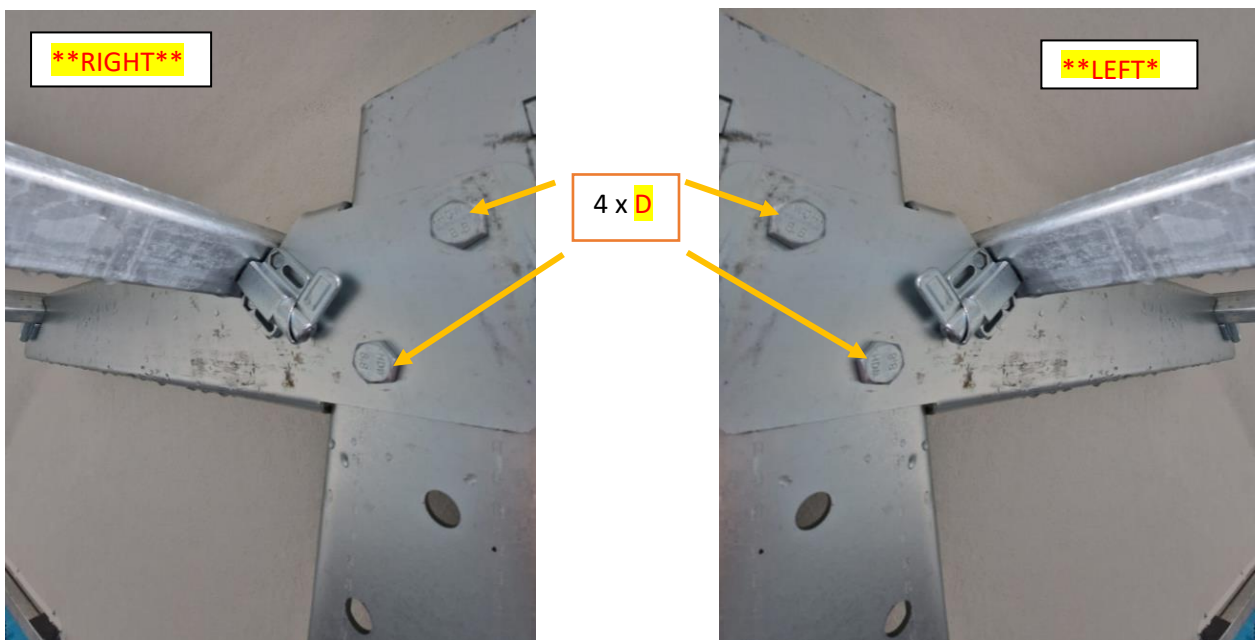
Step 4

After successfully carrying out step 3. Mount the locking pins to the side arms. Please note the orientation of the pins, when in the locked position the lever should be facing uppermost (see illustration). **C = M6 x 25mm Hex Head**



Step 5

Having fit all 4 locking pins, mount the side arms to the leg. A series of mounting heights are available. For best clearance over most car bonnets, we recommend using the top position. **D = M12 x 25mm Hex Head**



Step 6

Install the removable tyre rack bars into the arms by dropping them into the grooves notched out. Mark the holes to be drilled to allow the locking pin to seat into the bar and drill using a 13mm drill bit. *Marking of the holes can be best achieved by applying a small amount of grease (or similar) to the top of the locking pin.*



Inside tip: After installation mark each bar as front and rear, as when replacing after removal the bars will only fit in the position they were installed in.

Step 7

After fitting the bars, unlock one side of the bars and lift to fit the supplied sliding plates. To put the bars back in position the sliding plates must be slid to the opposite side. This allows the bars to close back up and fall into position. The sliding plates are used to help retain and strap down spare wheels and tyres as required.



Installation is now complete.